

CT3000 Fingerprint Software

Conlan Fingerprint QuickSetup



(FingerQS) software is an Windows based software that will help you to configure Conlan Fingerprint Reader quick and easy. You will be able to read the User list from the unit, retrieve finger data, save, load and then write back to the same or to other reader. It is useful especially when you want to enroll one user in more then one reader. Just retrieve data and then write in other reader. Before you start checking and modifying, make sure that the com port where the reader is connected has been selected in the software directory. Then you can start up the software by clicking on FingerQS icon. The main screen will appear.

Meniu:

New – Create a new file for the reader you want to work with.

Load – Load a file with reader information.

Save – Save the working file. At the first save, the name will be required.

Save As – Save the working file in a different name and/or directory.

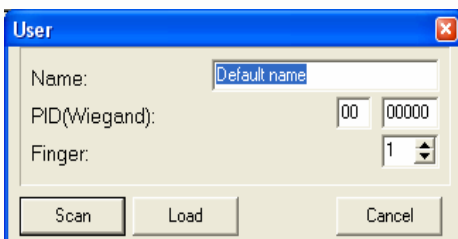
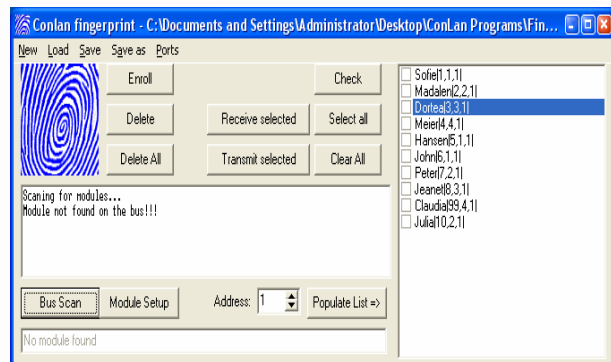
Ports – Choose the correct com port.

Buttons:

Enroll – Enroll a new user in the system. When you click, a new window appears asking for user name, PID and Finger as options. When all data is given/or just, press Scan and show your finger to the reader. PID is a number for Wiegand registration. Finger is normally 1, can be chosen for relay activities

Delete – Delete one user from the system. The user selected on the right list will be deleted.

Delete All – Delete all users from the reader.



Scan Module – Scan the bus for the readers. This operation can take few minutes to be completed. Anyway, as soon as one reader is detected, it will stop checking. The Address (ID number) will shown on the screen. All commands given from the software will be related to that address shown in the "Address". If you want to set the address manually, you have to do it in this field.

Module Setup – It will read the settings from the module and display Setup Window. All parameters are set here. See "Module Setup" for more information, page 4. If no reader is found at specific address, an error message appears.

Populate List – Retrieve from the reader a list of users enrolled. The User list will be filled in the right window afterwards. You should be aware about the fact that there will be retrieved only users that didn't send fingerprint information. In this case, go to the next steps.

Receive Selected – Receive all fingerprint information about the users that are selected in User list.

Transmit Selected – Send information to the Fingerprint Reader about a selected user that has been already stored through a previous Received command or Load.

Select All – Select all users from the list.

Clear All – Clear the selection of all users from the list.

When clicking right, one user activates a pop-up menu that gives you the options load/save fingerprint information from/to the file.

The file is of .ftp type. You can load fingerprint template at any time, but saving is only valid when you previously received or loaded from file – that means you should already have some data to save.

Some hints:

- When you want to enroll data in a reader from another reader, you may receive all from the source reader, then change address and transmit either all or a selection to the new reader.
- You may save the configuration of one reader after receiving all fingerprint templates. This can be useful in case of losing data or for writing to another reader.

Conlan Fingerprint Unlimited



Conlan Fingerprint Unlimited is the software that works with Conlan Fingerprint Reader and Keypad in verification mode, for unlimited amount of users. Information is stored in one computer, and the verifications are made using the user's PIN number and his/her own finger. Each finger data take no more than 1Kb/user. In on 1Gb hard drive space you can keep one million users, but computers today have from 40Gb up. A complete line consists of a Fingerprint Reader, a Keypad, one RS232-RS485 converter and one PC running Conlan Fingerprint Unlimited Software under Windows 98/2000/NT/XP. However, all the

settings, except the user name, can be made by the keypad only.

Programming fingerprints:

Key in your PIN then #, and then present your finger. If the system has successfully verified you, it activates its output.

Programming is made by using a master code, that will lead you in a programming menu, where you can enroll (1#) or delete(2#) one user. It is recommended to have the display of the computer in front of you, because you have all the indications there.

When you enroll one user you enter his PIN, then #, and then the user shows his finger to the reader. When you delete one user, you enter his PIN, then #, and the user will be deleted.

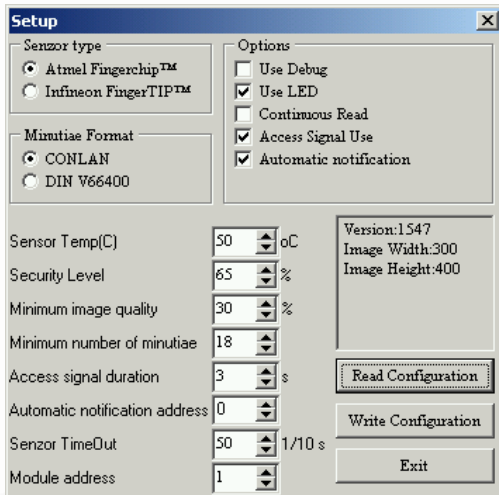
When you click on the screen area, you get some more information: Scan Module, previously described, and the List of users. Double click on one user, and you may give a real name to that user.

All events are logged in "Logs" directory, every day with a file, named yyyyymmdd.csv.



Module Setup:

Setup is made by editing unlimited .ini files. On the first line there is the master password, on the second line, the com port used for communication. Module Setup button will open Setup Window, which is described below.



Sensor Type:

Conlan use Atmel sensor.

Minutiae Format:

Conlan use Conlan format.

Options:

Use debug - It is only for debugging purpose and service, so let it unchecked.

Use LED - When activated, LEDs are used for user's guidance.

Continuous Read - When the sensor is activated, read continuously; when a finger is detected, read and match.

Access Signal Use - When activated, Open collector

is activated after a successful identification.

Automatic Notification - Internal Use – **Do Not Change**

Sensor Temperature - The temperature that the system will keep on Atmel Sensor.

Security Level - Threshold used to classify a matching score as recognized

Minimum image quality - Threshold needed to extract a feature from a fingerprint image.

Minimum number of minutiae - Minimum number of minutiae for a template to be valid

Access signal duration - Time duration, when open collector is activated

Automatic notification address - Internal Use – **Do Not Change**

Sensor Timeout - Duration which the sensor waits for a finger after an according command.

Module Address - The address of the module. If you change it and then press Write, the module address changes.

If you require more information regarding usage of CT3000 Fingerprint Software, please contact us and we will make every effort to provide support and find a solution to the issue.