

Lock Address (485 - LA)

INTRODUCTION:

The Addressable Lock (AL) is a small intelligent unit to open / lock a door, a cupboard, a wardroom, a safe, draws, etc. The AL is working according to orders from keypad/readers that are installed to the system. The AL could be called the security over the 485 bus.

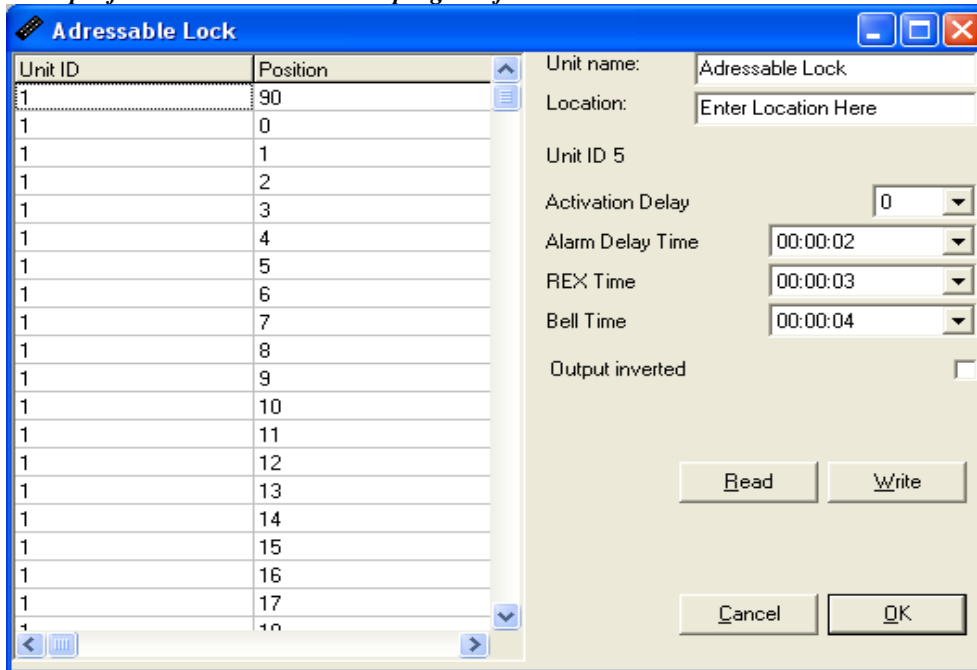
FEATURES:

- AL package includes print and 8 wires
- Program up to 50 Keypad/Readers for each AL or visa versa
- Could be mounted in other units' boxes or in the doors
- Stand alone programming or by Conlan eXpress
- REX bottom
- Door contact
- OC output for door opening

OPTIONS:

The AL works on the CT2000 bus. All parameters of AL are programmable. AL can be programmed from a keypad/Prox reader or by the Conlan eXpress win program.

Example from the Conlan eXpress program for the addressable lock 485 – LA:



The Addressable lock are here programmed to be activated by a keypad (ID 1) from the codes placed on pos. 90, 0,1,2.... Etc. Could be mixed as you please. Pos 204 means the bell key. Activation time (0) means that the OC works immediately (can be up to 60 min.)

Alarm delay time (2 sec) Means door open 2 sec after OC active then you will have an alarm. REX time is the exit bottom (activate the OC on 3 sec). Bell time (4 sec) The OC will be active in 4 sec after you key in the bell bottom. All unit ID and Position can be programmed stand alone or by Conlan express.



The print is 2x2 cm and delivered with a plastic foot for montage in any place.

Activation delay: The time before the OC will be activated:

Value	0	1.	.5.	.10.	.15	16	17	18	19	20	21	22	.26.	.30.	.34.	.38.	.54.
Time	:0	:1	:5	:10	:15	:30	:45	1:0	1:15	1:30	1:45	2:0	3:0	4:0	5:0	6:0	10:0

From 0..15, 1 sec/digit.

From 16 ... 255 15 sec/digit

Value	.94.	.134.	.174.	.214.	.234.	242	246	250	254	255
Time	20:0	30:0	40:0	50:0	55:0	57:0	58:0	59:0	60:0	60:15