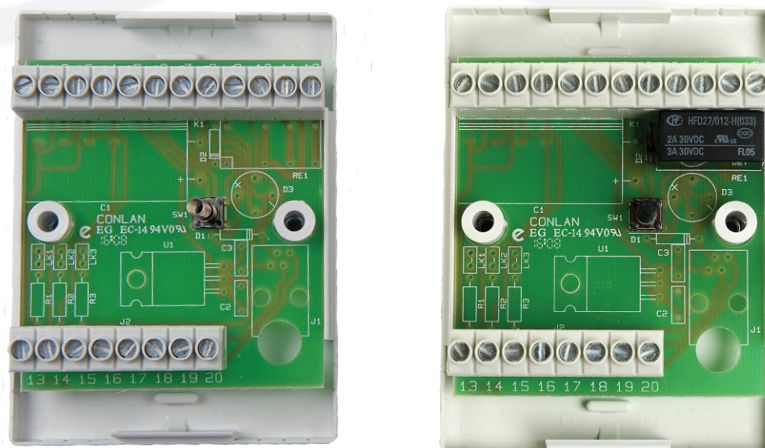


# Assembly board CVT1 / CVT1r

CVT 1 - Art. No: 460085  
CVT1r - Art. No.: 460085r

## Manual





## Assembly board - CVT1

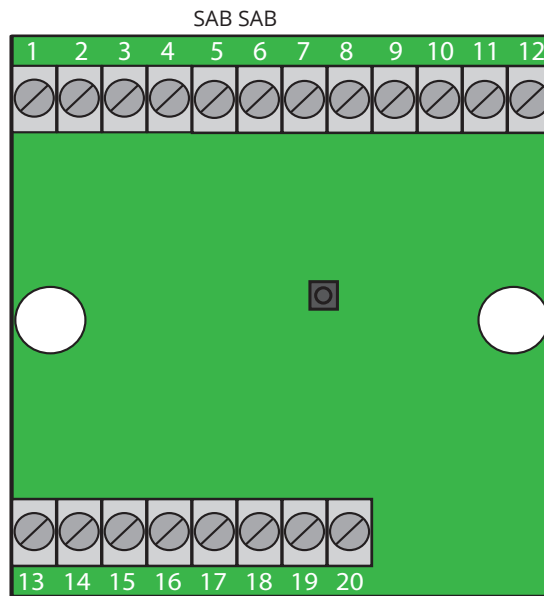
- 18 free connection terminals
- Tamper switch
- Board dimensions (HxW): 60x60 mm
- Box dimensions (HxWxD): 88,5x65x31 mm

## Assembly board - CVT1r

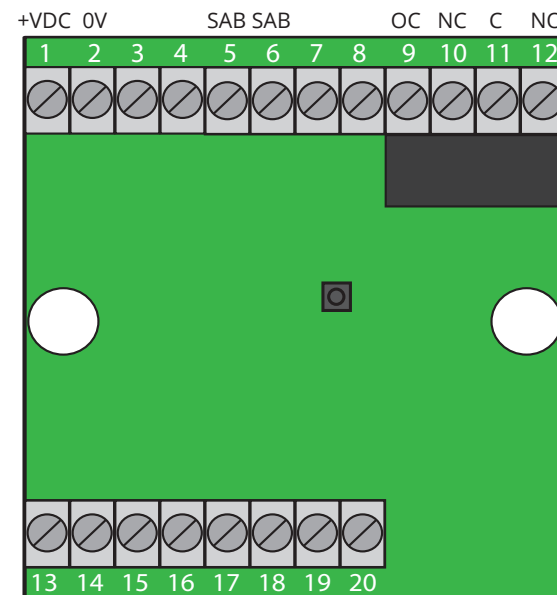
- 10 free connection terminals
- Tamper switch
- Relay output (C, NO, NC)
- Board dimensions (HxW): 60x60 mm
- Box dimensions (HxWxD): 88,5x65x31 mm



# CVT1



# CVT1r





## CVT1 connections

CVT1 has 18 free connection terminals. In addition, there is a tamper switch on terminals 5 and 6.

## CVT1r connections

Terminal	Connection to keypad		Connection	CVT1r
1	Red	+12 VDC	Internally connected to terminal 13	+12 VDC
2	Black	0V DC, GND	Internally connected to terminal 14	
3				Free terminal
4				Free terminal
5				Tamper switch
6				Tamper switch
7				Free terminal
8				Free terminal
9	Yellow	OC from CT/PR		Controllable relay (0V)
10				NC
11				C
12				NO
13		+12 VDC	Internally connected to terminal 1	Terminal 1 = terminal 13
14			Internally connected to terminal 2	Terminal 2 = terminal 14
15				Free terminal
16				Free terminal
17				Free terminal
18				Free terminal
19				Free terminal
20				Free terminal

Thank you for choosing Conlan's products.

For further assistance, please contact our support service.