

Fingerprint

4-Relay Module

Art. No.: 460186

User's Manual



Table of Contents

	Page
1. Introduction	3
2. Electrical Connections	3
3. Communication Parameters	3
4. Mode Selection	4
5. Fingerprint Reader Association (learning mode)	5
6. Startup Messages & Log Output	5
6.1 Boot message	6
6.2 Messages during Normal Operation	6
7. Limitations	6
7.1 Other Devices	6
8. N-factor Authentication Mode (verify different fingers within 120 sec).....	6
9. MAP Fingerprint Mode (verify different fingers to different access)	7

1. Introduction

The Fingerprint 4-Relay Box enables you to control up to 4 relay using 4 or more distinct fingerprints.

The fingerprint 4-Relay Box comes preconfigured, and there's no need to further configuration by PC or other configuration software.

The Fingerprint 4-Relay Box has 2 jumper selectable modes of operation; "N-factor authentication" and "Map Fingerprint authentication".

2. Electrical Connections

The Fingerprint 4-Relay Box needs only 12 V DC and communication/data connections.

The power supply must be connected to terminals 12V and 0V. Ensure, that the polarity is correct before powering on the device.

Communications is established by connecting the blue wire from the Fingerprint reader to terminal "B". The orange wire must be connected to terminal "A".

The maximum power consumption is 100mA (when all relays are set).

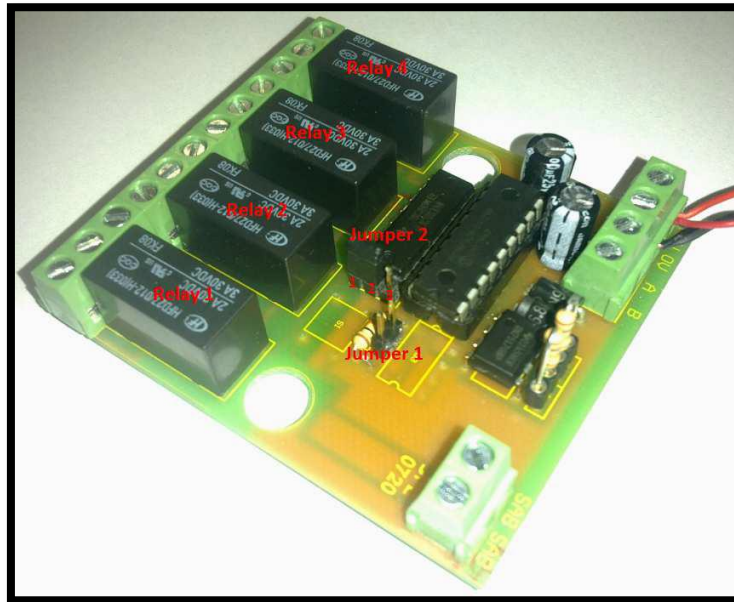
3. Communication Parameters

The Fingerprint reader must be configured with the correct communication parameters. Normally this has already been done during production. However, if you experience communication problems make sure, that the Fingerprint reader communication parameters are set up for:

9600 BAUD
8 databits
No Parity
1 stop bit

4. Mode Selection

The mode of operation is defined during power-on. Simply attach or remove the Jumper "jp1" from the Fingerprint 4-Relay Box to select mode:

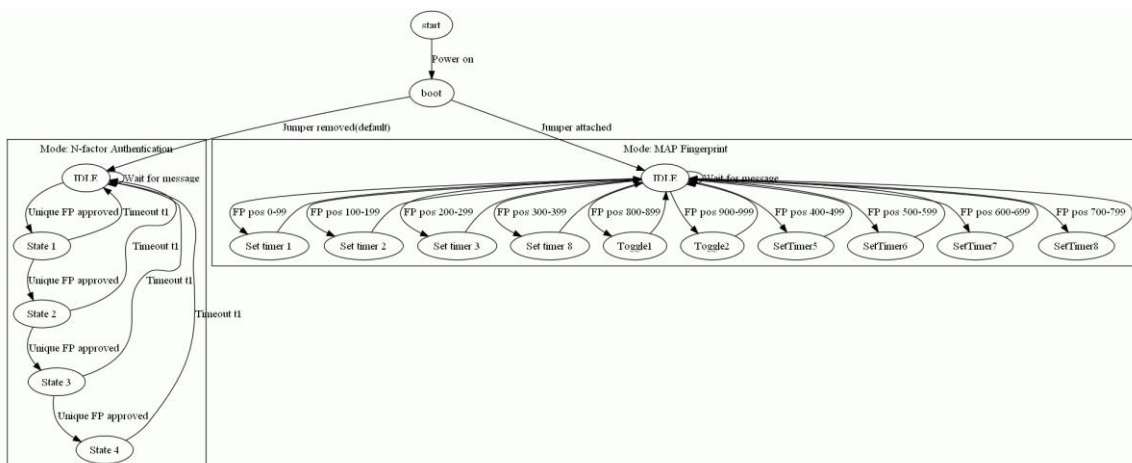


Mode	Jumper removed (default)	Jumper attached
N-factor authentication	X	
Map Fingerprint authentication		X

If the Jumper is not present, only N-factor authentication is possible.

The Jumper should be remain seated or detached while powered on, since changing the setup during Authentication may cause undesirable side effects.

If you wish to change the operation mode, power off the device and change the Jumper setting. When the unit is powered back up, the operation mode is changed.

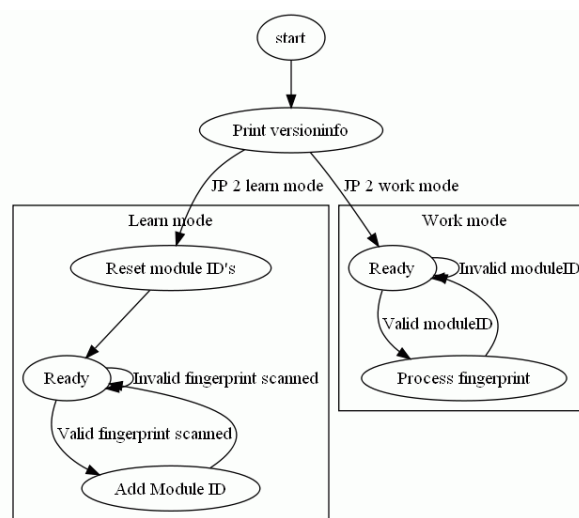


5. Fingerprint Reader Association (learning mode)

You may decide to connect multiple Fingerprint readers to the same communication bus (RS485). In this case, each Fingerprint reader should have an unique module ID in order to communicate unambiguously.

If you need to associate a Fingerprint 4-Relay Box with one or more Fingerprint readers, you may do so by setting the Fingerprint 4-Relay Box in learning mode.

Learning mode is set by attaching Jumper 2 pin 1 + 2 before powering on the Fingerprint 4-Relay Box. When powering on the learning mode, previously learned module ID's are erased.



It is currently possible to associate up to 128 module ID's (Fingerprint readers) with a single Fingerprint 4-Relay Box. Please note, that **this number is likely to be reduced to 32 modules** in future versions.

When all ID's has been added/learned, you should remove power and then remove Jumper 2 before applying power.

6. Startup Messages & Log Output

Under certain circumstances human readable strings (US-ASCII) are sent to the data bus. These strings are readable using a standard serial-terminal application such as Hypercom, Putty or Realterm. For Windows we recommend Putty (<http://www.putty.org/>) and for other operating systems Putty or Minicom (<http://freshmeat.net/projects/minicom/>).

6.1 Boot message

When booting, the Fingerprint 4-Relay Box will print out (send data to the communication bus) version info.

```
FPRELAY 1.6  
[MODE] mode ([STATE])
```

where [MODE] is either "Unique FP" or "Map FP" depending on Jumper 1 setting and [STATE] is either "work" or "learn" depending on Jumper 2 setting.

6.2 Messages during Normal Operation

Each time a valid fingerprint is processed, the corresponding fingerprint ID is sent to the bus. The format is

"Userid: number"

where number is a 6-digit integer. In case the number requires fewer digits, the number is prepended with 0's (zeroes) until the number string is 6 digit wide.

7. Limitations

7.1 Other Devices

The Fingerprint 4-Relay Box has been tested in conjunction with Fingerprint readers and Fingerprint reader configuration software. If you decide to connect other devices to the same communication bus, please be aware, that undesired side effects may arise.

8. N-factor Authentication Mode

N-factor authentication (or Multi-factor authentication) means using any independent two-four fingerprints to increase the assurance that the bearer has been authorized to access secure areas or systems.

The factors (fingerprints) may be associated with several individual bearers. That is, using the Fingerprint 4-Relay Box you may define a system, which only allows access if more 2-4 individual persons grants access by swiping their fingerprint.

State	Relay 1	Relay 2	Relay 3	Relay 4	Authentication
IDLE	off	off	off	off	N/A
State 1	on	off	off	off	1-factor
State 2	on	on	off	off	2-factor
State 3	on	on	on	off	3-factor
State 4	on	on	on	on	4-factor

An authentication session starts by swiping the first fingerprint. If the fingerprint is known/approved to the Fingerprint reader, a message is sent through the standard RS485 serial bus. The Fingerprint 4-Relay Box will receive the message, and then open the first relay. If a second fingerprint (unique for this session) is approved, the second relay will be switched on. Similarly the third and fourth relay will be switched on when unique fingerprints are approved.

A timeout counter ensures that any active relay is reset after a timeout (t1~120sec). However, this timeout is reset each time a unique fingerprint is swiped (maximum 4 resets during a session).

The N-factor can be defined simply by choosing the appropriate relay.

Please note, that in situations where multiple Fingerprint readers are associated with a single Fingerprint 4-Relay Box, each Fingerprint reader should have the same mapping of fingerprint ID's.

For example if a person's fingerprint is stored at position 20 on the first Fingerprint reader and position 34 in the second Fingerprint reader, this person will be able to perform successful 2 factor authentication. If the fingerprints are stored at the same position the Fingerprint Relay Box will ignore the second input.

9. MAP Fingerprint Mode

This mode allows you to associate one or more fingerprints to a single relay. The association is done simply by defining the fingerprint ID when enrolling new fingerprints. In order to associate a fingerprint with a specific ID, the enrollment process must be controlled by a PC program (UniFinger or similar).

ID's between 0 and 399 are associated to relays 1-4, each swipe sets the relay for 5 seconds.

ID's between 400 and 799 are also associated with relays 1-4. The difference is, that the relay will be set for 30 seconds.

The term "sets" means that the relay is powered on until a timeout. The timeout is reset (timer starts over) if a second finger is approved regardless of the current timeout status. That is, the set-period may be prolonged by quickly re-swiping the fingerprint.

Finally ID's 800-999 are used for toggling relay 3 and 4. That is, approved fingerprints stored with ID 800-899 toggles relay 3 each time a fingerprint is swiped. If relay was previously on, the relay will be turned off. If the relay is turned off, toggling will set the relay on.

The relay mapped to fingerprint ID's 200-299 & 600-699 overlaps fingerprints mapped to ID's 800-899 (relay 3). Similar the ID's 300-399 & 700-799 overlaps fingerprints mapped to 900-999 (relay 4);

When ID's 800-899 are recognized, the corresponding relay will change state regardless of previously swiped fingerprints.

When ID's 200-299, 600-699 or 300-399, 700-799 are recognized, the corresponding relay will be set (turned on) and later turned off according to previously defined time-out values regardless of previously read fingerprints.

Fingerprint position	Relay 1	Relay 2	Relay 3	Relay 4
0-99	5 sec	N/A	N/A	N/A
100-199	N/A	5 sec	N/A	N/A
200-299	N/A	N/A	5 sec	N/A
300-399	N/A	N/A	N/A	5 sec
400-499	30 sec	N/A	N/A	N/A
500-599	N/A	30 sec	N/A	N/A
600-699	N/A	N/A	30 sec	N/A
700-799	N/A	N/A	N/A	30 sec
800-899	N/A	N/A	Toggle	N/A
900-999	N/A	N/A	N/A	toggle

Table 1

Thank you for choosing Conlan's products.

Please contact our support service for further information whenever needed.